

TOMORROW TODAY

# SIGNA™ Explorer

Fueled by SIGNA™Works

[gehealthcare.com/mr](http://gehealthcare.com/mr)





This document can be used for promotion for the following countries:

Christmas Island, Cocos (Keeling) Islands, Cook Island, Fiji, Kiribati, Marshall Islands, Federated States of Micronesia, Nauru, Niue, Norfolk Island, Palau, Papua New Guinea, Samoa, Solomon Islands, Tokelau, Tonga, Tuvalu, Vanuatu, Mongolia, Afghanistan, Bahrain, Jordan, Kuwait, Lebanon, Oman, Palestine, Qatar, Yemen, Republic of Kosovo, Republic of Moldova, Andros, Antigua and Barbuda, Aruba, Bahamas, Barbados, Basse-Terre, Belize, Bequia, Bolivia, Bonaire, Caribbean Islands, Cat Island, Cayman Islands, Chile, Curacao, Deutch Antilles, Dominican Republic, Eleuthera, Granada, Guatemala, Haiti, Honduras, Iles de la Petite Terre, Iles de Saintes, Jamaica, Malvinas Islands, Marie-Galante, Mustique, New Providence, Palm Island, Saba, Sain Marteen, Saing EusTatius, Saint Barthelemy, Saint Lucy, Saint Vincent, San Thomas, Suriname, Trinidad and Tobago, Turks and Caicos, Young Island, Armenia, Azerbaijan, Georgia, Algeria, Angola, Benin, Botswana, Burkina Faso, Burundi, Cameroon, Cape Verde, Central African Republic, Chad, Comoros, Congo – Brazaville, Congo – Kinshasa, Cote d'Ivoire, Djibouti, Egypt, Equatorial Guinea, Eritrea, Gabon, Gambia, Ghana, Guinea, Guinea-Bissau, Lesotho, Liberia, Madagascar, Malawi, Mali, Mauritania, Mauritius, Mozambique, Namibia, Niger, Rwanda, Sao Tome and Pricnipe, Senegal, Seychelles, Sierra Leone, Somalia, South Sudan, Swaziland, Togo, Tunisia, Uganda, Zambia, Zimbabwe, Brunei, Laos, Philippines, Bhutan, Maldives, and Nepal.

SIGNA  
Explorer



The control panel is a semi-circular array of buttons and indicators. It includes a central display area with three black rectangular segments. Below the display are two red warning icons. The panel is divided into two main sections by a central vertical line. Each section contains a set of buttons for navigation and selection, including directional arrows and a central button. There are also several circular icons representing different scan or protocol options.





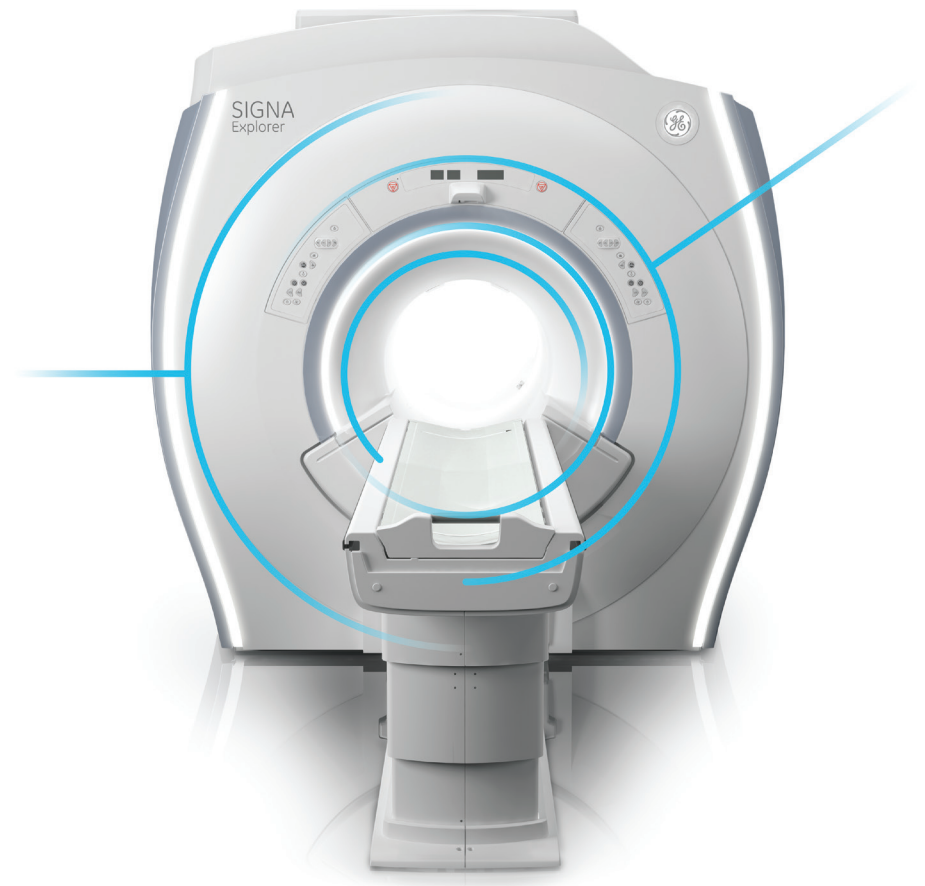
# 1.5T

## Outstanding performance

Today's healthcare challenges are growing and becoming more specific to individual patient needs. As a result, there has been a shift in the need for outcomes-based technology that can address not just specific clinical needs, but operational and financial needs as well. For challenges like these, you need SIGNA™ Explorer, a premium, 60 cm 1.5T system.

Fueled by our SIGNA™Works platform, SIGNA™ Explorer offers exceptional image quality, high throughput, increased patient comfort and a powerful, yet simplified user-centric operation.

Take your 1.5T as far as it will go.

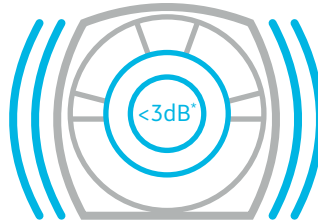




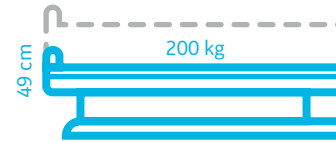
# Patient comfort in practice

From reducing noise levels to lowering the table height and offering free-breathing applications, we carefully thought through the entire patient experience to find opportunities for improvement.

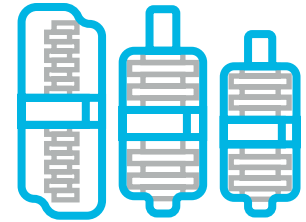
Combining advancements in design, technology and applications, SIGNA™ Explorer sets a new standard for patient comfort.



SilentScan reduces noise to near ambient levels (< 3dB\*)



Low table height gives patients easy access



16-channel Flex Coil Suite accommodates a wide range of body types

\* Above ambient levels; sound measured at the isocenter of the bore.

SIGNA  
Explorer



Control panel on the left side of the door, featuring a cluster of circular buttons with various icons (e.g., a star, a triangle, a circle) and a small digital display.

Control panel on the right side of the door, featuring a small digital display, a white push-button, and two red warning symbols (a triangle with a slash).

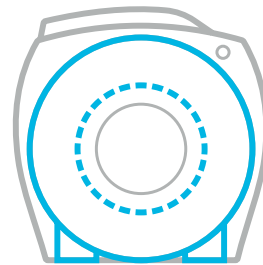
Control panel on the bottom right side of the door, featuring a cluster of circular buttons with various icons and a small digital display.



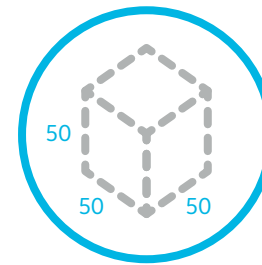
# Built around our modern design magnet

Through the combination of our modern design magnet and high-performance reconstruction speeds, SIGNA™ Explorer makes it easy to produce uniform, high-quality images.

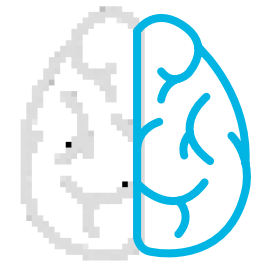
- High-performance reconstruction allows for everyday use of HyperSense
- In-line processing automates advanced post-processing techniques



Includes the same modern design magnet that's in our wide bore systems

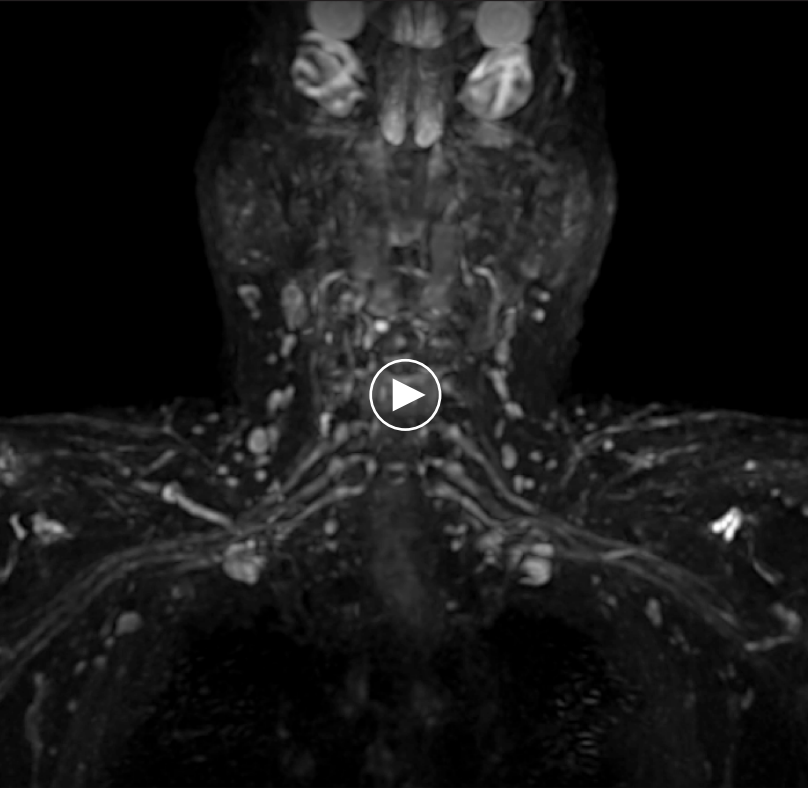


50 x 50 x 50 cm FOV for off-center oncology and fat saturation challenges



Optical RF technology provides a high signal-to-noise ratio for improved image quality





HyperSense with HyperCube

## With great speed comes great clarity

Image processing speeds play an important role in productivity and throughput. SIGNA™ Explorer includes two accelerating techniques, HyperSense and HyperCube, which provide astonishing imaging with remarkable speed. Used together with a high-performance reconstruction engine, these technologies enable advanced imaging protocols in routine exam slots.

HyperSense



Utilizes proprietary compressed sensing technology for up to 50 percent reduction in scan time while maintaining resolution\*

HyperCube



Selective excitation for high spatial resolutions and fast scan times

HyperSense with HyperCube




Use these two technologies together for up to 8x faster scan times\*

\* Compared to conventional imaging..

## Fueling the future of MR

SIGNA™Works redefines productivity and drives your imaging to the next level with the standard applications included in BodyWorks, CVWorks, NeuroWorks, OncoWorks, OrthoWorks and PaedWorks. Additional innovative applications allow you to expand your areas of expertise even further with HyperWorks, ImageWorks, SilentWorks and 3D ViosWorks.

This groundbreaking application portfolio enhances the capabilities of SIGNA™ Explorer. You will experience more accurate and consistent image quality as well as reduced scan times and faster throughput. In addition to clinical and operational improvements, you can expect higher patient satisfaction with silent, free-breathing, contrast-free and needle-free applications.

[Learn more about SIGNA™Works](#) 



# NeuroWorks

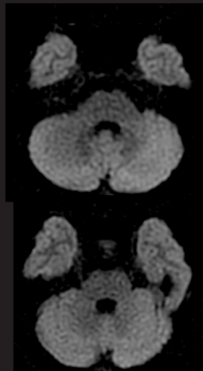
Offering neuro applications from automated positioning to post-processing and fast imaging with great diagnostic value.

Achieve high-resolution, motion-insensitive images with 2D PROPELLER and 3D PROMO and distortion-free diffusion images with DWI PROPELLER.

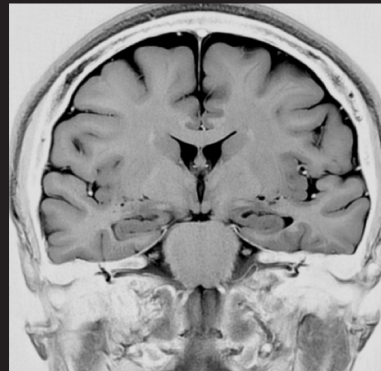
| Allow patients to move freely with applications that enable real-time tracing with no sensor needed.



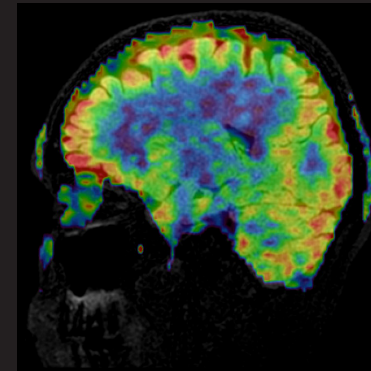
T2 FatSat PROPELLER



DWI PROPELLER



STIR PROPELLER  
with inverted grey scale



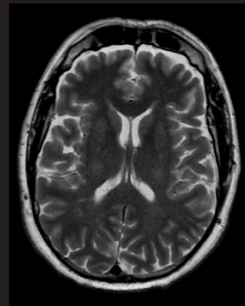
Quantitative 3D ASL

# NeuroWorks

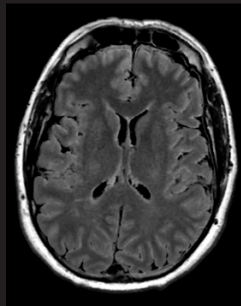
Deliver multiple contrasts in a single scan with MAGiC, reducing scan time by up to 50 percent compared to acquiring all contrasts separately.

■ Scans up to eight contrasts in one five-and-a-half-minute scan.

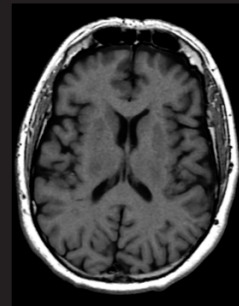
■ Allows you to change the contrast after acquisition.



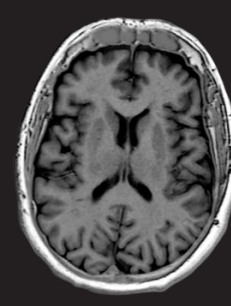
T2



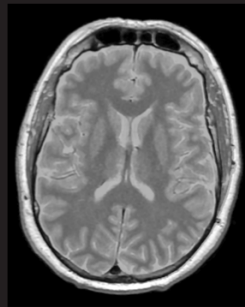
T2 FLAIR\*



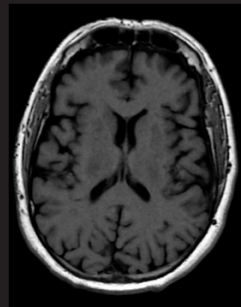
T1



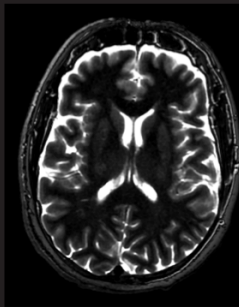
PSIR



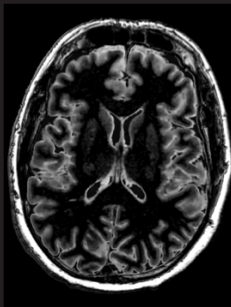
PD



T1 FLAIR

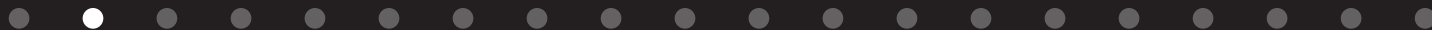


STIR



DIR

MAGiC



\* It is recommended to acquire conventional T2 FLAIR images in addition to MAGiC.

# NeuroWorks

See robust, homogenous fat/water separation even in difficult-to-scan areas using a 2-point Dixon technique with Fast Spin Echo (FSE) Flex.

- Generates two series of images in a single scan, one with fat suppression and one without.
- Acquires multiple contrasts in a single scan, reducing the need for multiple acquisitions.



Cervical spine  
Single scan Sagittal T2 FSE Flex  
Water, fat, in-phase and out-of-phase

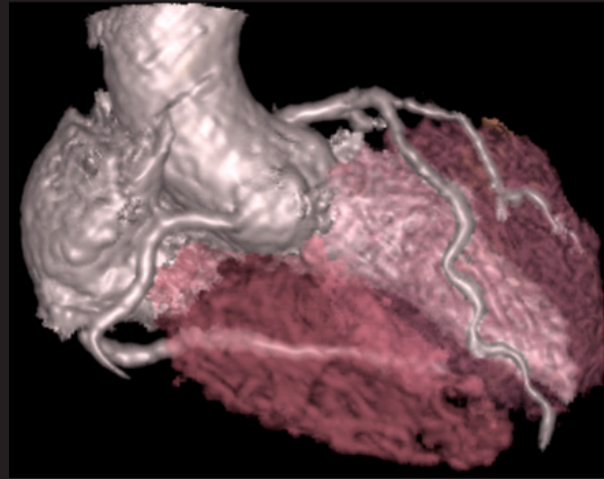




# CVWorks

Intuitive cardiac techniques that adapt to different patient types. Assess morphology, flow, function and tissue viability and gain crucial insights into vascular structure and flow dynamics.

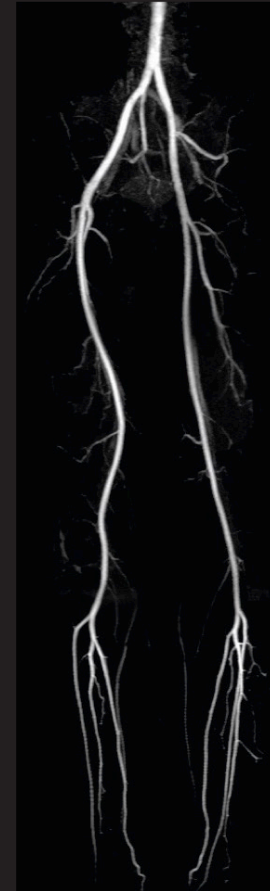
Non-invasively image coronary arteries and evaluate vascular structures with 3D Heart and visualize blood flow in diverse anatomies without gadolinium with Inhance DeltaFlow.



3D Heart



Renal arteries  
Inhance



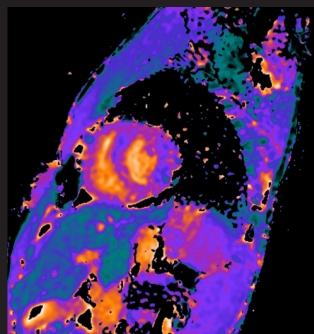
Inhance DeltaFlow  
3 stations



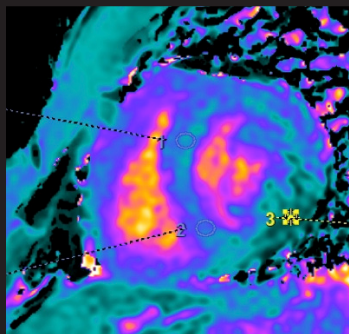
# CVWorks

Automatically correct motion for T1 mapping and leverage two methods of acquisition for T1\* (MOLLI) or true T1 measurements with CardioMaps.

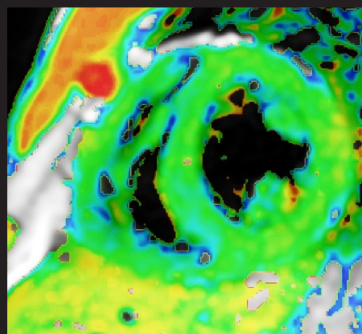
- Quantify T1, T2 and T2\* values as well as generate high-resolution anatomical data sets and assess tissue viability.



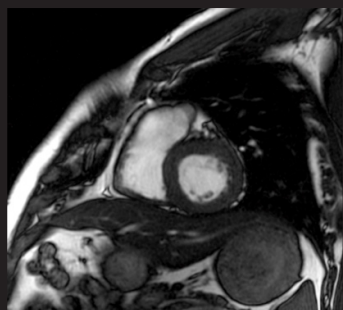
Short Axis SMARTT1 map for true T1 measurement



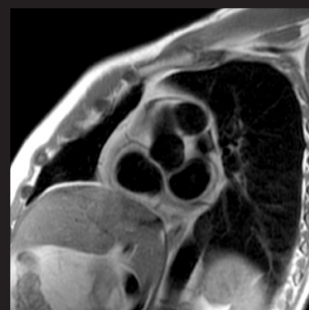
Short Axis MOLLI T1 map



Short Axis T2 map



Short Axis FIESTA



Black Blood SS FSE

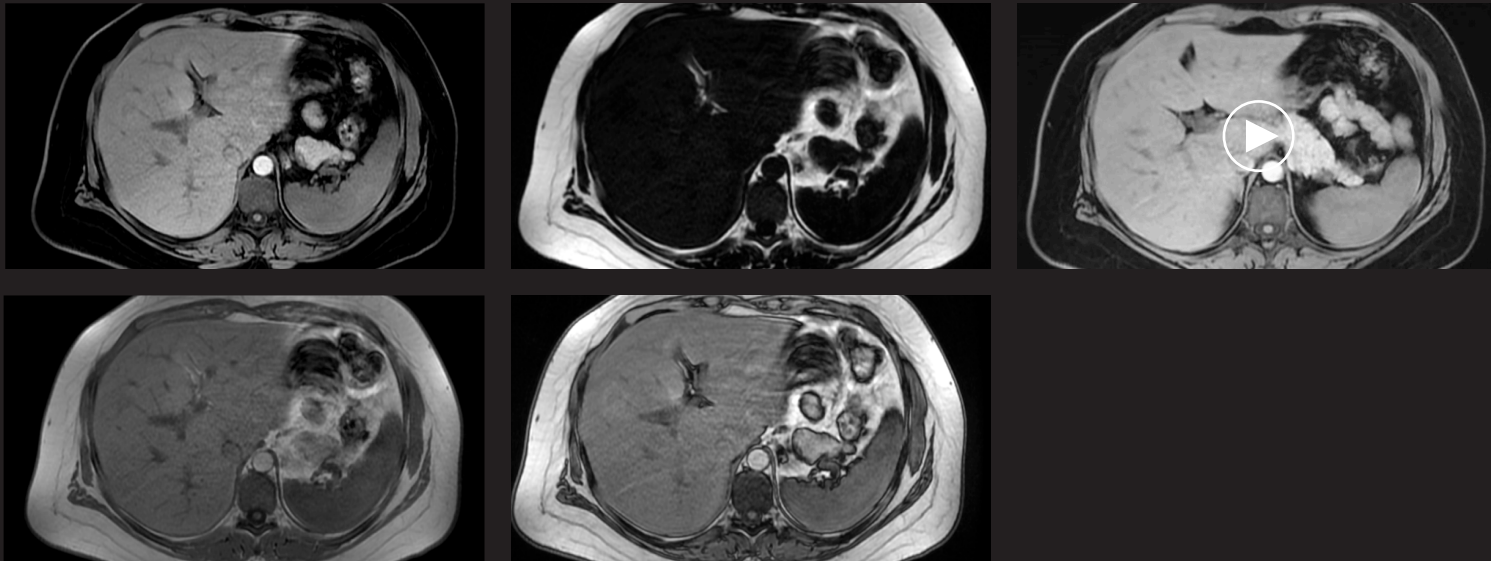
# BodyWorks

Images whole-body, abdominal and pelvic anatomy with speed and flexibility.

Reduce respiratory motion for more accurate abdominal studies with Turbo LAVA.

■ Allow patients to breathe freely during dynamic multi-phase imaging.

■ Free-breathing dynamic scans with Auto Navigator and Turbo mode reduces scan time by up to 50 percent.



Free-breathing, Auto-navigated liver imaging  
Axial Turbo LAVA Flex

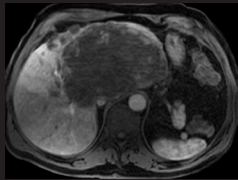


# BodyWorks

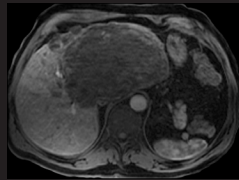
Image the entire liver, prostate or breast in less than three-second intervals with DISCO.

3D images meet the challenge of capturing multiple dynamic phases over time.

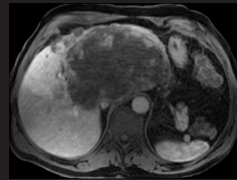
Compatible with Auto Navigator for free-breathing dynamic scans.



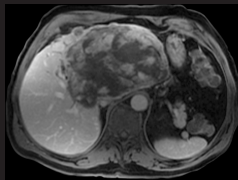
Phase 1



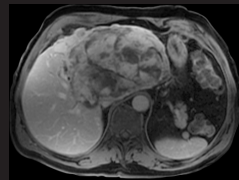
Phase 2  
7-sec delay



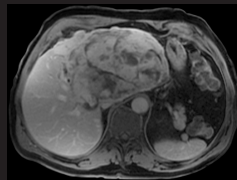
Phase 3  
14-sec delay



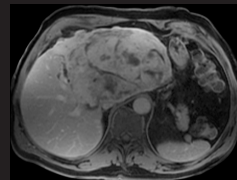
Phase 4  
54-sec delay



Phase 5  
90-sec delay

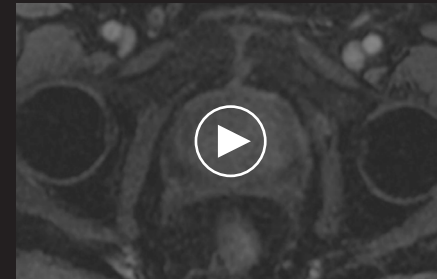


Phase 6  
200-sec delay



Phase 7  
270-sec delay

Liver imaging  
DISCO  
7 sec per phase



Prostate imaging  
DISCO  
5 sec per phase





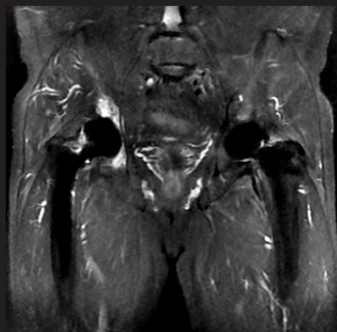




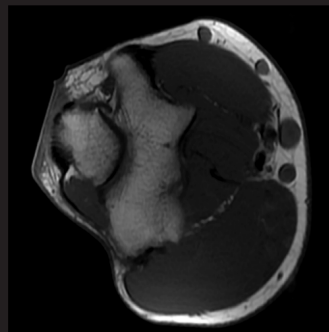
# OrthoWorks

This extensive library of imaging techniques enables you to image bone, joint and soft tissue with remarkable tissue contrast.

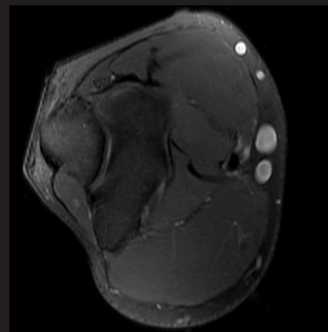
Visualize soft tissues and bone near MR Conditional implants with MAVRIC SL.



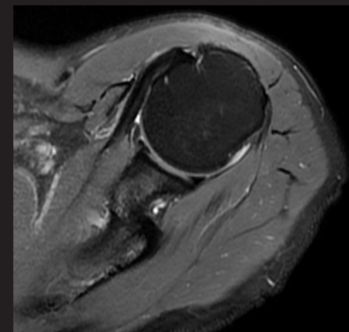
Coronal STIR MAVRIC SL



Axial T1



Axial PD FatSat



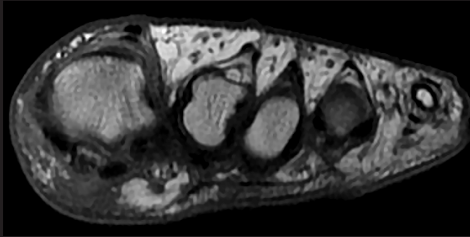
Axial T2 FRFSE FatSat



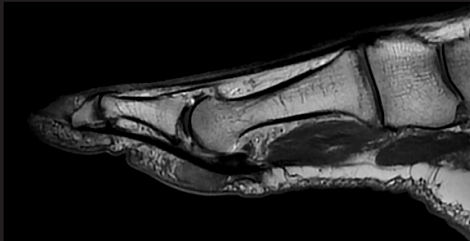
# OrthoWorks

Substantial reduction of susceptibility artifact around MR Conditional implants with T1 MAVRIC SL.

■ T1-weighting capability for pre- and post-Gd contrast enhancement.



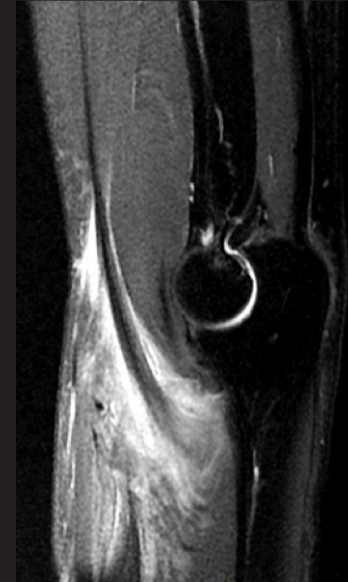
Axial/Coronal T2



Sagittal T2



Sagittal T1



Sagittal T2 FatSat



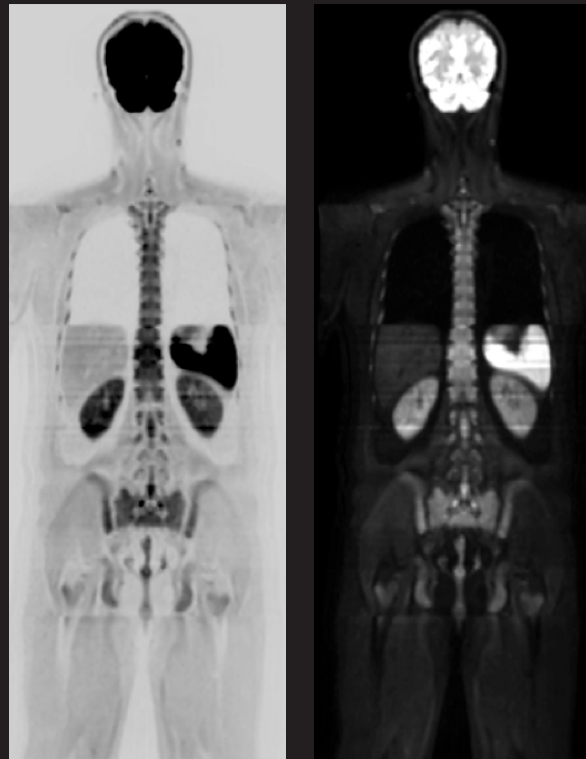
Coronal PD FatSat

# OncoWorks

A collection of techniques for capturing anatomic and morphologic data to enable oncological assessment of anatomy.

Acquire diffusion images with a high signal-to-noise ratio in short acquisition times with eDWI.

■ Decrease overall exam sequences and time.



Whole-body diffusion  
b50/b700



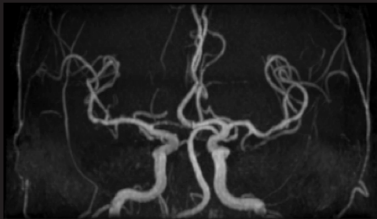




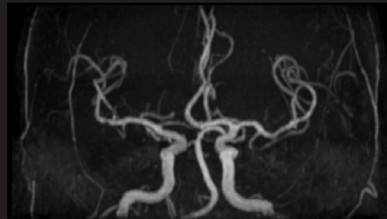
# HyperWorks

Innovative applications that improve image quality, efficiency and workflow to help you perform better than ever before.

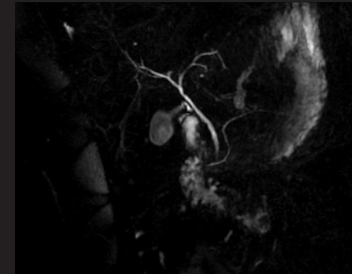
Reduce overall scan times without compromising image quality with HyperSense.



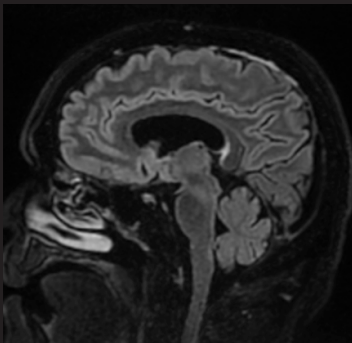
Axial 3D TOF without HyperSense  
1.4 mm, 5:15 min



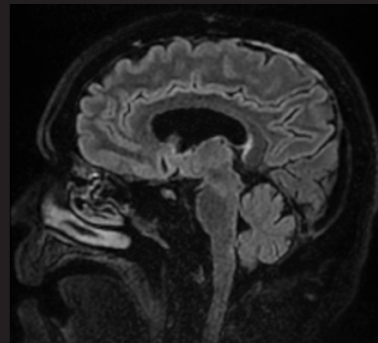
Axial 3D TOF with HyperSense  
1.4 mm, 3:18 min



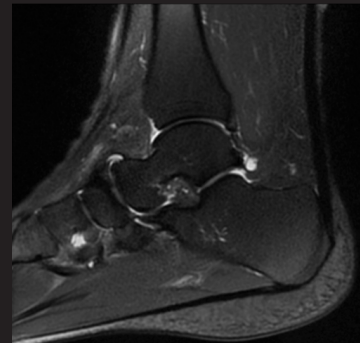
3D MRCP with HyperSense



Sagittal Cube FLAIR without HyperSense  
3:41 min



Sagittal Cube FLAIR with HyperSense  
2:24 min

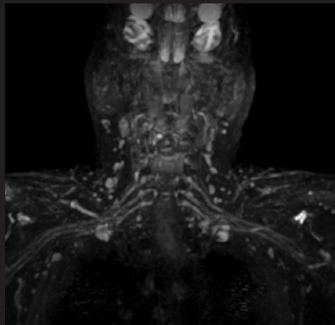


Sagittal HyperCube PD FatSat with HyperSense

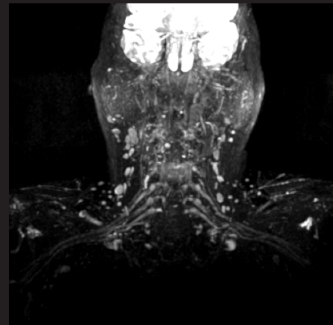


# HyperWorks

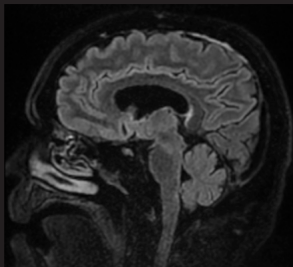
Expand the capabilities of 3D imaging by reducing scan times and minimizing artifacts with HyperCube and reduce scan times even further by simultaneously using HyperSense and HyperCube.



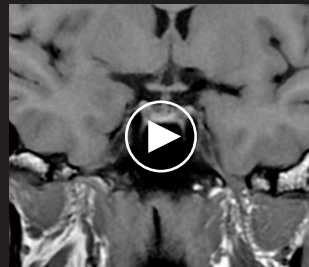
Cube DIR with HyperSense



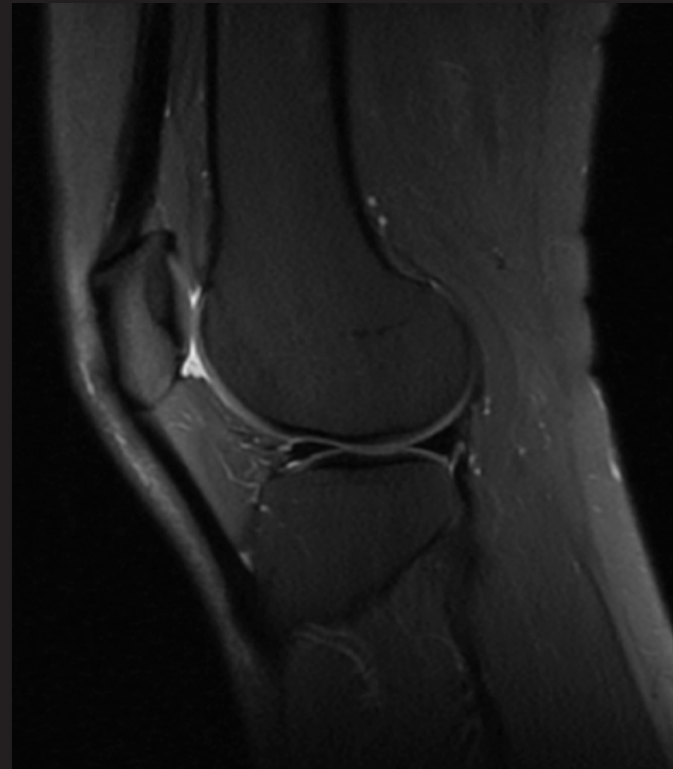
Cube STIR with peripheral nerve enhancement and HyperSense



Sagittal Cube FLAIR with HyperSense



Coronal HyperCube T1



Sagittal Cube PD with HyperSense

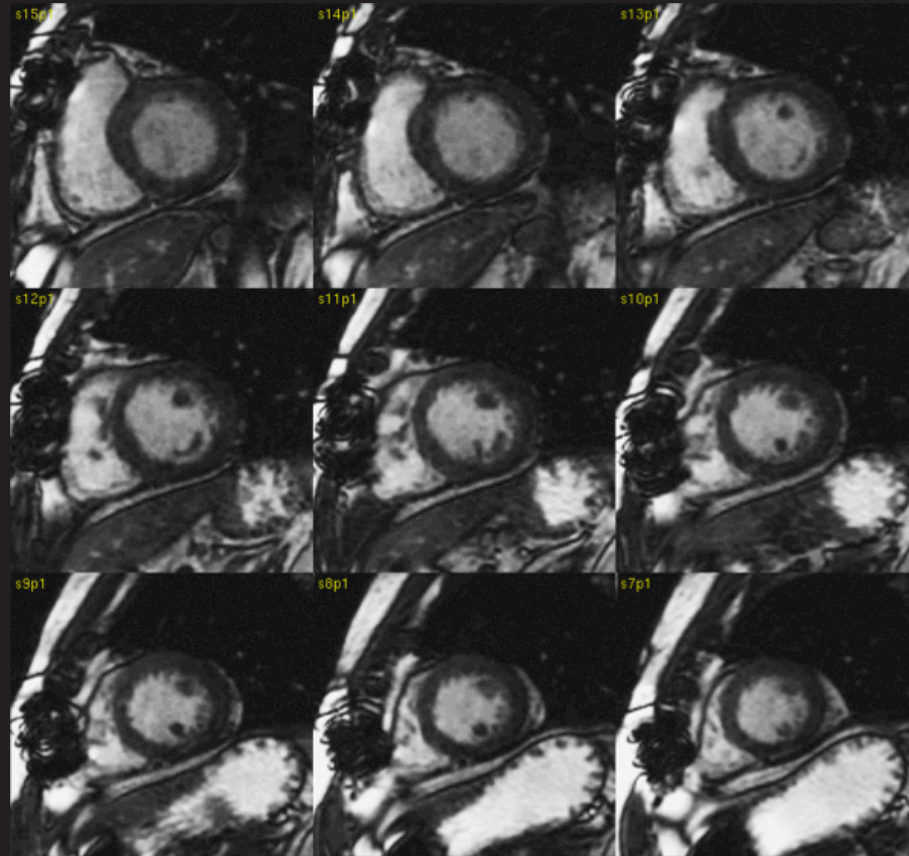




# ViosWorks

Visualize and quantify with 3D ViosWorks.

■ Increase patient comfort with a quick eight-minute, free-breathing scan.



3D ViosWorks\*



\* Representational images showing ViosWorks capability available on SIGNA™ Explorer.

# ImageWorks

Boost your overall MR performance with ImageWorks applications.

Streamline your analysis workflow of advanced function, flow, tissue characterization, perfusion and tissue mapping of the heart with cmr<sup>42</sup>, a post-processing and visualization solution.

■ One-stop processing for cardiac imaging analysis.



cmr<sup>42</sup> post-processing\*



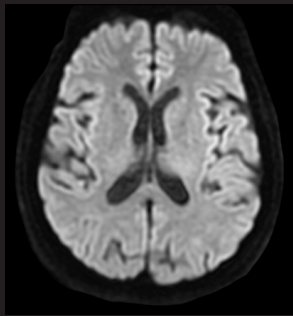
\* Representational images showing cmr<sup>42</sup> capability available on SIGNA™ Explorer.



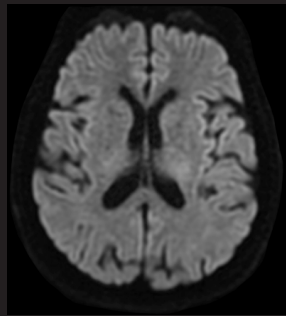
# ImageWorks

Generate multiple synthetic b-values from one DWI scanned series with MAGiC DWI so you can view diffusion contrast changes in real time after acquisition.

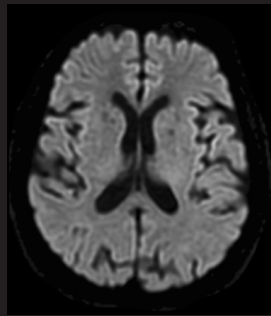
■ Increase productivity by enabling higher b-values in shorter scan times.



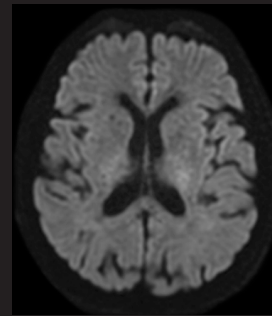
b1000



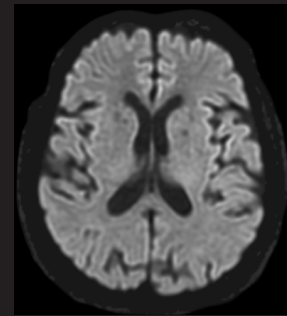
b1400



b1400 Synthetic  
MAGiC DWI



b2000



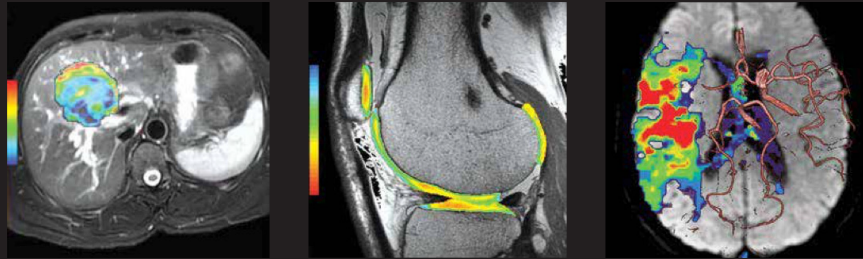
b2000 Synthetic



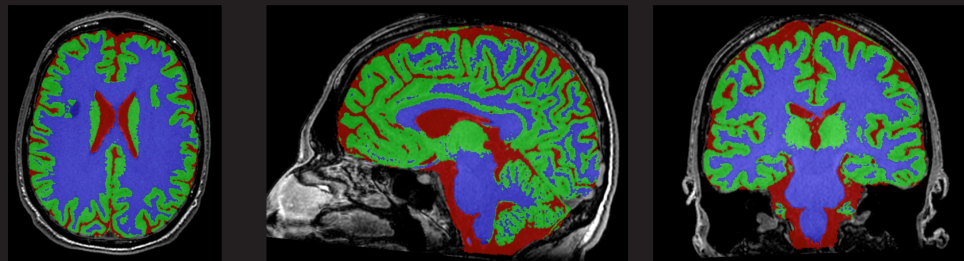
# ImageWorks

Simplify complex exams with READYView, a visualization platform that gives you access to advanced post-processing technology.

Automatically segment and label white matter hyperintensities (WMH) candidates and brain volume with Quantib Brain, which may help accelerate the assessment of brain images over time.



READYView post-processing\*



Segmented white matter, grey matter and cerebral spinal fluid  
Quantib Brain BRAVO with reformats

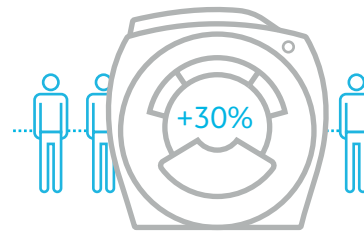


\* Representational images showing READYView capability available on SIGNA™ Explorer.

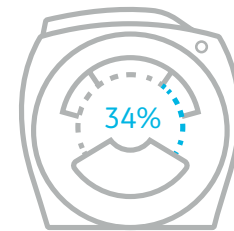
# Enhance your financial performance with operational efficiency

SIGNA™ Explorer has energy-saving, Ecomagination-certified technology and a space-saving footprint. We also provide customizable service and training programs with the ability to upgrade your system through our SIGNA™ Lift program, when the time is right. All of which helps to improve your operational efficiency.

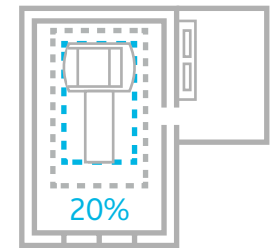
[Learn more about SIGNA™ Lift](#)



Increases throughput by 30 percent to free up time for more referrals\*



Ecomagination-certified technology provides up to 34 percent energy savings\*



Designed to use over 20 percent less space with a small 27 m<sup>2</sup> footprint for easy siting and installation‡

\* Under normal operating conditions, when compared to previous generations of MR systems.

‡ Compared to the average siting space required of other 1.5T MR systems.

# Outperform with 1.5T

SIGNA™ Explorer is built to leverage the full potential of our modern design magnet. To do this, we optimized all the surrounding technology. The result is an MR system with an improved patient experience, exceptional imaging performance and access to a wide range of innovative applications.

It's an investment packed with operational efficiencies to ensure you outperform in every aspect of your practice.





GE Healthcare provides transformational medical technologies and services to meet the demand for increased access, enhanced quality and more affordable healthcare around the world. GE (NYSE: GE) works on things that matter – great people and technologies taking on tough challenges.

From medical imaging, software & IT, patient monitoring and diagnostics to drug discovery, biopharmaceutical manufacturing technologies and performance improvement solutions, GE Healthcare helps medical professionals deliver great healthcare to their patients.

## Imagination at work

© 2018 General Electric Company – All rights reserved.

GE Healthcare reserves the right to make changes in specifications and features shown herein, or discontinue the product described at any time without notice or obligation. Contact your GE Healthcare representative for the most current information. SIGNA, Continuum, GE and the GE Monogram are trademarks of General Electric Company. GE Healthcare, a division of General Electric Company. GE Medical Systems, Inc., doing business as GE Healthcare.

JB57729XX